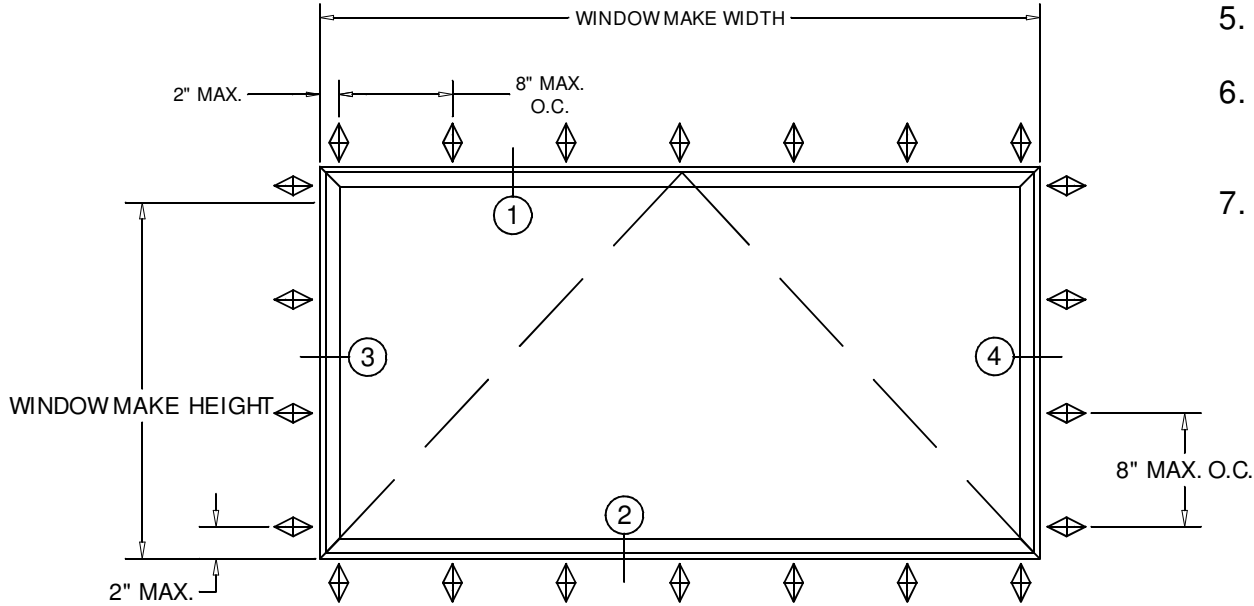


NOTE: TYPICAL V300 AWNING VINYL WINDOW - NAIL FIN INSTALLATION

- Notes:
1. Installations depicted satisfy the requirements of the 8th Edition (2023) of the Florida Building Code for Wind Pressures and Overall Sizes shown.
 2. As Tested Anchor spacings are shown on the Elevations.
 3. Wood Framing are assumed to S-P-F (G=0.42) or denser.
 4. Maximum Frame Shim Space is 1/4" as shown. Shims shall be non-compressible and load bearing type.
 5. Exterior and Interior shall be sealed according to Shop Drawings.
 6. Products shown are Non-Impact Resistant and require Approved Protection Devices if used in Windborne Debris regions.
 7. Not for use in High Velocity Hurricane Zone (HVHZ).



MARK "A"

Maximum				
FW	FH	DLO-W	DLO-H	Pressure
60"	32"	53 5/16"	25 5/16"	± 50 PSF

1" Insulating Glass
 Two lights 1/8" Annealed Glass
 with 1/2" Spacer

Project Name: **V700 Awning
 NAIL FIN
 Installation Instructions**

GENERAL NOTES

QUAKER WINDOW PRODUCTS
 WILL NOT BE RESPONSIBLE
 FOR FIELD MEASUREMENT,
 QUANTITIES, & INSTALLATION
 DESIGN. CONTRACTOR MUST
 VERIFY ALL DIMENSIONS.

PHONE (573)-744-5211
 FAX (573)-744-5586
 COMMERCIAL
 FAX (573)-744-5822
 www.quakerwindows.com

QUAKER
 Commercial Windows and Doors

Scale: **NONE**
 Sheet #: **1 of 3**

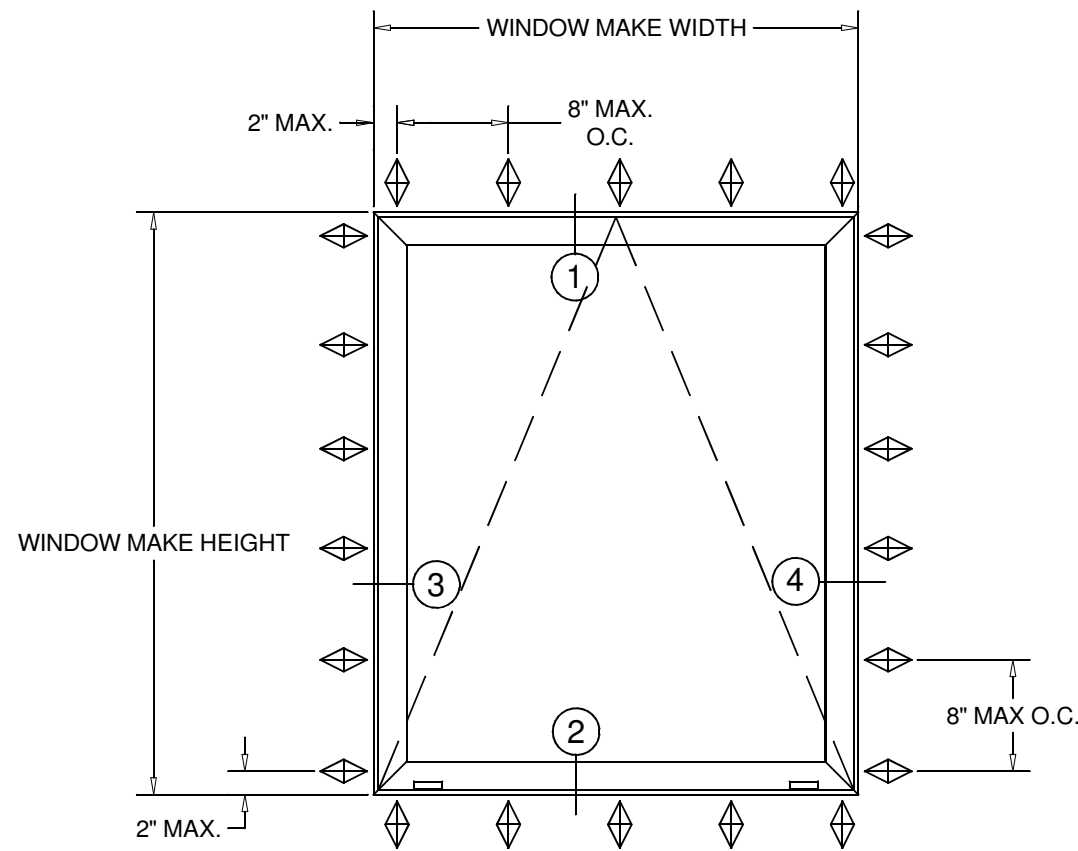
Drawn By: **Bud**
 Date: **07-10-2023**

504 Highway 63 South
 Freeburg, MO 65035
 drafting@quakerwindows.com

NOTE: TYPICAL V300 AWNING VINYL WINDOW - NAIL FIN INSTALLATION

Notes:

1. Installations depicted satisfy the requirements of the 8th Edition (2023) of the Florida Building Code for Wind Pressures and Overall Sizes shown.
2. As Tested Anchor spacings are shown on the Elevations.
3. Wood Framing are assumed to S-P-F (G=0.42) or denser.
4. Maximum Frame Shim Space is 1/4" as shown. Shims shall be non-compressible and load bearing type.
5. Exterior and Interior shall be sealed according to Shop Drawings.
6. Products shown are Non-Impact Resistant and require Approved Protection Devices if used in Windborne Debris regions.
7. Not for use in High Velocity Hurricane Zone (HVHZ).



MARK "B"

Maximum				
FW	FH	DLO-W	DLO-H	Pressure
32"	60"	25 3/8"	53 3/8"	± 50 PSF

1" Insulating Glass
Two lights 1/8" Annealed Glass
with 1/2" Spacer

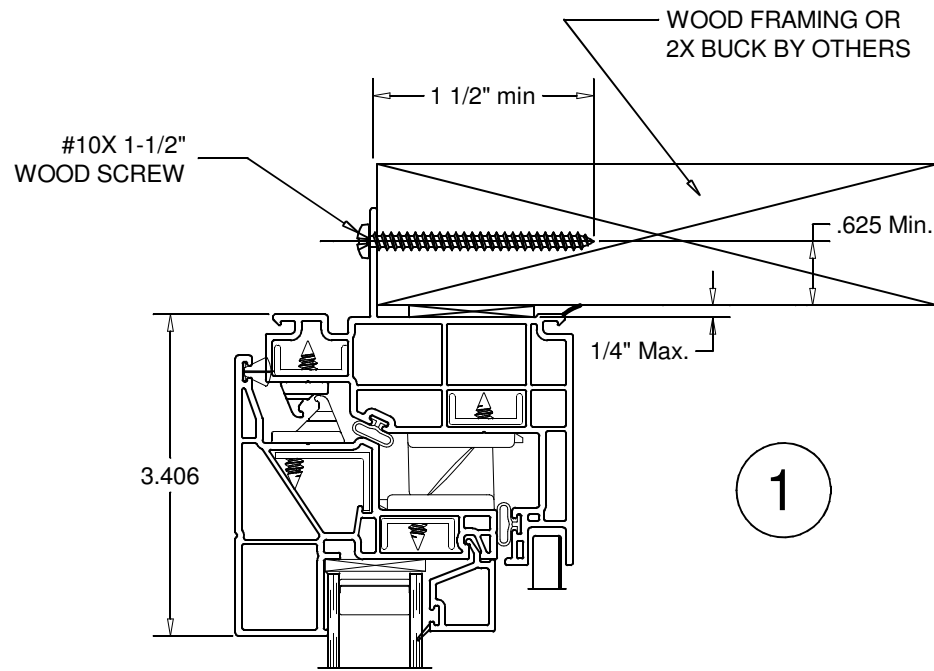
Project Name: **V700 Awning
NAIL FIN
Installation Instructions**

GENERAL NOTES
Description:
QUAKER WINDOW PRODUCTS
WILL NOT BE RESPONSIBLE
FOR FIELD MEASUREMENT,
QUANTITIES, & INSTALLATION
DESIGN. CONTRACTOR MUST
VERIFY ALL DIMENSIONS.

PHONE (573)-744-5211
 FAX (573)-744-5586
 COMMERCIAL
 www.quakerwindows.com
 FAX (573)-744-5822
 Scale: NONE
 504 Highway 63 South
 Freeburg, MO 65035
 drafting@quakerwindows.com
 Drawn By: Bud
 Date: 07-10-2023
 Sheet #: 2 of 3

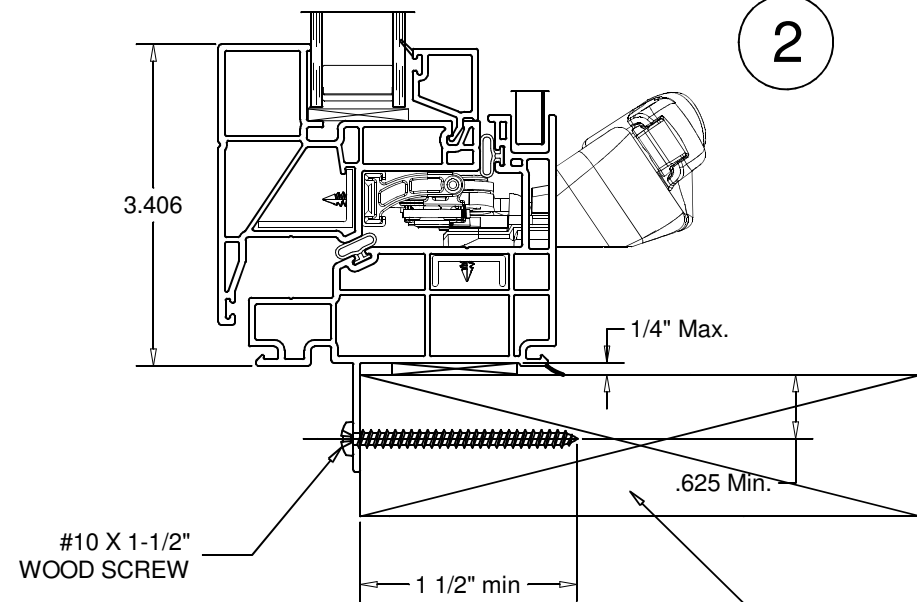


NOTE: TYPICAL V300 AWNING VINYL WINDOW - NAIL FIN INSTALLATION



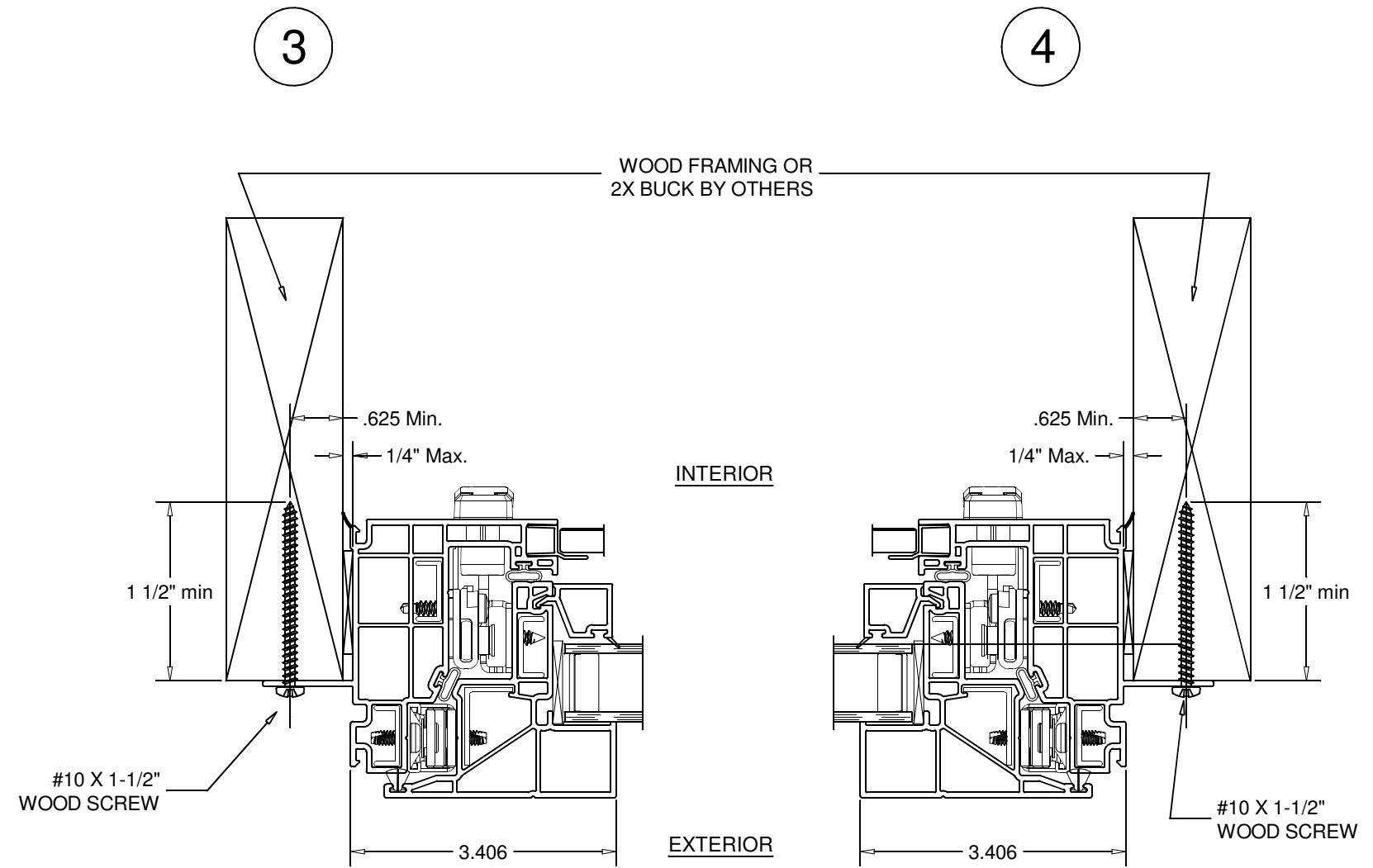
EXTERIOR

INTERIOR



VERTICAL SECTION DETAIL

WOOD FRAMING INSTALLATION



HORIZONTAL SECTION DETAIL

WOOD FRAMING INSTALLATION

Project Name: **V300 Awning
NAIL FIN
Installation Instructions**

GENERAL NOTES

QUAKER WINDOW PRODUCTS
WILL NOT BE RESPONSIBLE
FOR FIELD MEASUREMENT,
QUANTITIES, & INSTALLATION
DESIGN. CONTRACTOR MUST
VERIFY ALL DIMENSIONS.

PHONE (573)-744-5211
FAX (573)-744-5586
COMMERCIAL
FAX (573)-744-5822
www.quakerwindows.com

QUAKER
COMMERCIAL
WINDOWS AND DOORS

Scale: NONE
Sheet #: 3 of 3

504 Highway 63 South
Freeburg, MO 65035
drafting@quakerwindows.com

Drawn By: Bud
Date: 07-10-2023